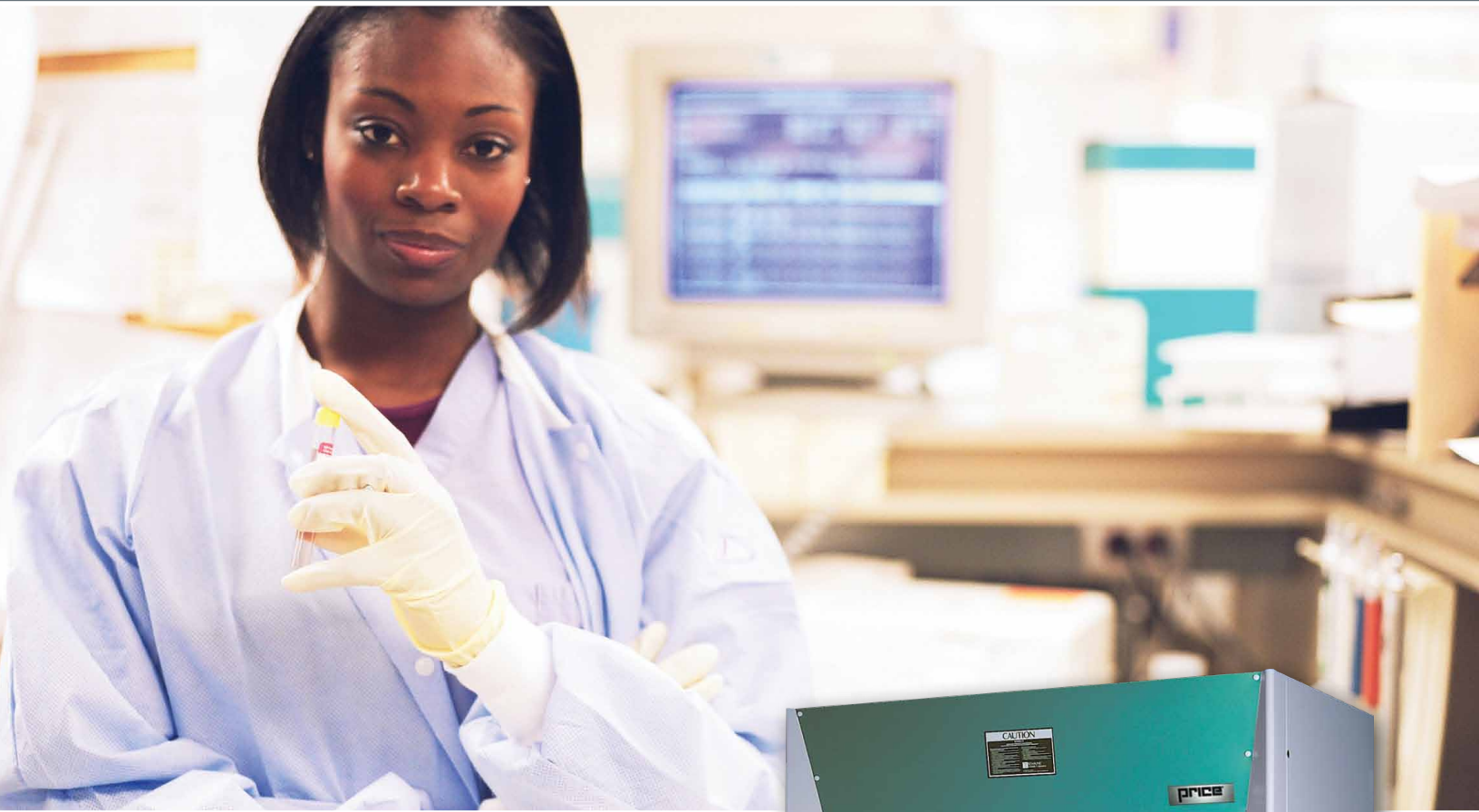


PRICE®



PRICE Fume Hoods

- Unsurpassed Quality
- State-of-the-Art Technology
- Styles to Meet All Your Laboratory Application Needs

www.ehpricesales.com



DYNAMIC BENCH FUME HOOD (DBH & DWH)

Built with the highest level of comfort, safety and efficiency in the market, the Dynamic Bench Fume Hood offers up to 73% energy savings over standard fume hoods and is a key component in the Canada Green Building Council LEED Program.

- Ultra Quiet fume hood operation features sound levels under 40 dba
- Air Alert 600 Fume Hood Monitor provides a visual one-hour timeline of fume hood performance
- Six Panel Combination lower sash provides multiple protective working configurations
- Sash Stop at 10" high provides full width work opening while maximizing splatter and fume barrier for user protection
- 4', 5' 6' and 8' sizes available
- Over 70% less exhaust air volume required to operate



HIGH PERFORMANCE FUME HOOD (HPH)

The High Performance Fume Hood offers up to 45% energy savings over standard fume hoods, along with a host of user friendly features.

- Energy saving lighting using single bulb, low profile T-5 fluorescent light fixture
- Self-closing sash to 18" for less exhaust volume and maximum protection (patent pending)
- Air Alert 600 Airflow Alarm with digital readout, visual and audible alarms, and onboard data logging (recommended option)
- 4', 5', 6', 7' & 8' sizes available
- Low constant volume design



CHEMICAL BENCH FUME HOOD (CBH & CWH)

Made with the same care and quality found in the Dynamic Bench and High Performance Fume Hoods, these general purpose hoods can be tailored to the application needs of any laboratory.

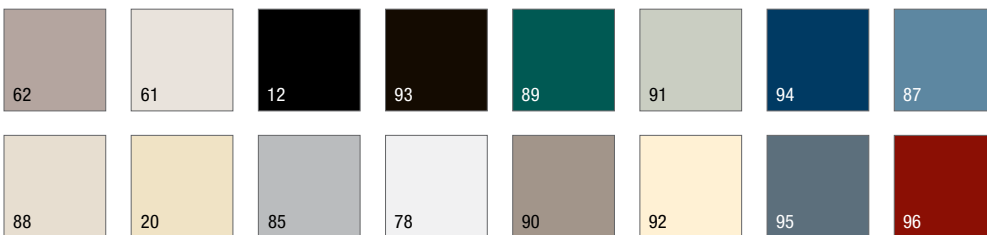
- Exclusive Kemresin Work Tops dished work surface available in black or white, as well as many other options including stainless steel
- Combination sash option and walk-in option
- Low Profile PVC Sash Tracks provide smooth sash operation, reduced air turbulence and seal the interior side panel
- 4', 5', 6' & 8' sizes available, as well as Isotope & Perchloric models





The founding principles of our company have never changed - business integrity, first class service and a commitment to people. Price manufacturing endeavors arose from our belief that we could supply superior products and services at a reasonable price. Our mission is to become the worldwide supplier of preference for air distribution products and services. You can rely on Price – our products and services – with confidence. Product improvement is a continuing endeavor at Price. Therefore, specifications are subject to change without notice. Consult your Price sales representative for current specifications or more detailed information.

Available in these colors:



- 62 Driftwood
- 61 Light Neutral
- 12 Black
- 93 Chocolate
- 89 Midori
- 91 Sage
- 94 True Blue
- 87 Mountain Blue
- 88 Malt
- 20 Sand Tan
- 85 Satin Grey
- 78 Snow White
- 90 Amazon
- 92 Butter Silk
- 95 Stormy Blue
- 96 Wineberry